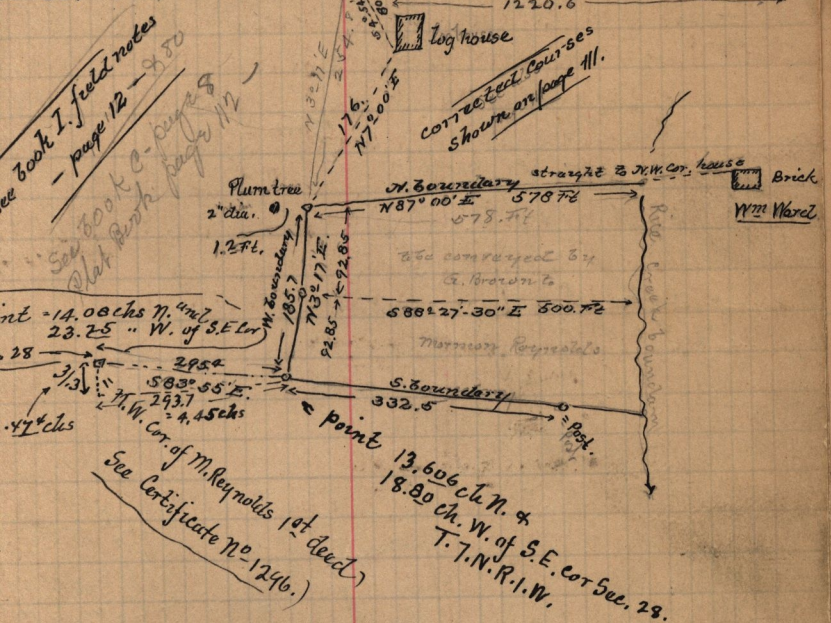


March 13<sup>th</sup> 1893.

J. Dickinson

Henry Warren

Survey made for George Brown at North Ogden, N.W. Sec. 28 T. 7. N. R. 1. W.



See book I. field notes - page 12 - 850  
See book C - page 8  
Plat Book page 112

corrected courses shown on page 111.

See Certificate No. 1296.)  
M. W. Cor. of M. Reynolds 1st dead

June 3-1893. Copy of description of land to be conveyed by Geo. Brown to Mormon Reynolds, according to the above survey. Issued by self. Pt S.E. 1/4 Sec. 28. T. 7. N. R. 1. W. Beg. at a point 13.606 chs. N. and 18.80 chs. W. of S.E. cor. sd. 1/4 Running N 4° 16' E 2.81 chs, N 88° 00' E 8.76 chs. to channel of Rice Creek, thence S.W. in channel of said Cr. to a point 6.735 chs, S 83° 55' E from beg. thence N 83° 55' W 6.735 chs to beg. 2.7 acres.

See also cert No. 1296  
- See Plat Book page 112 -